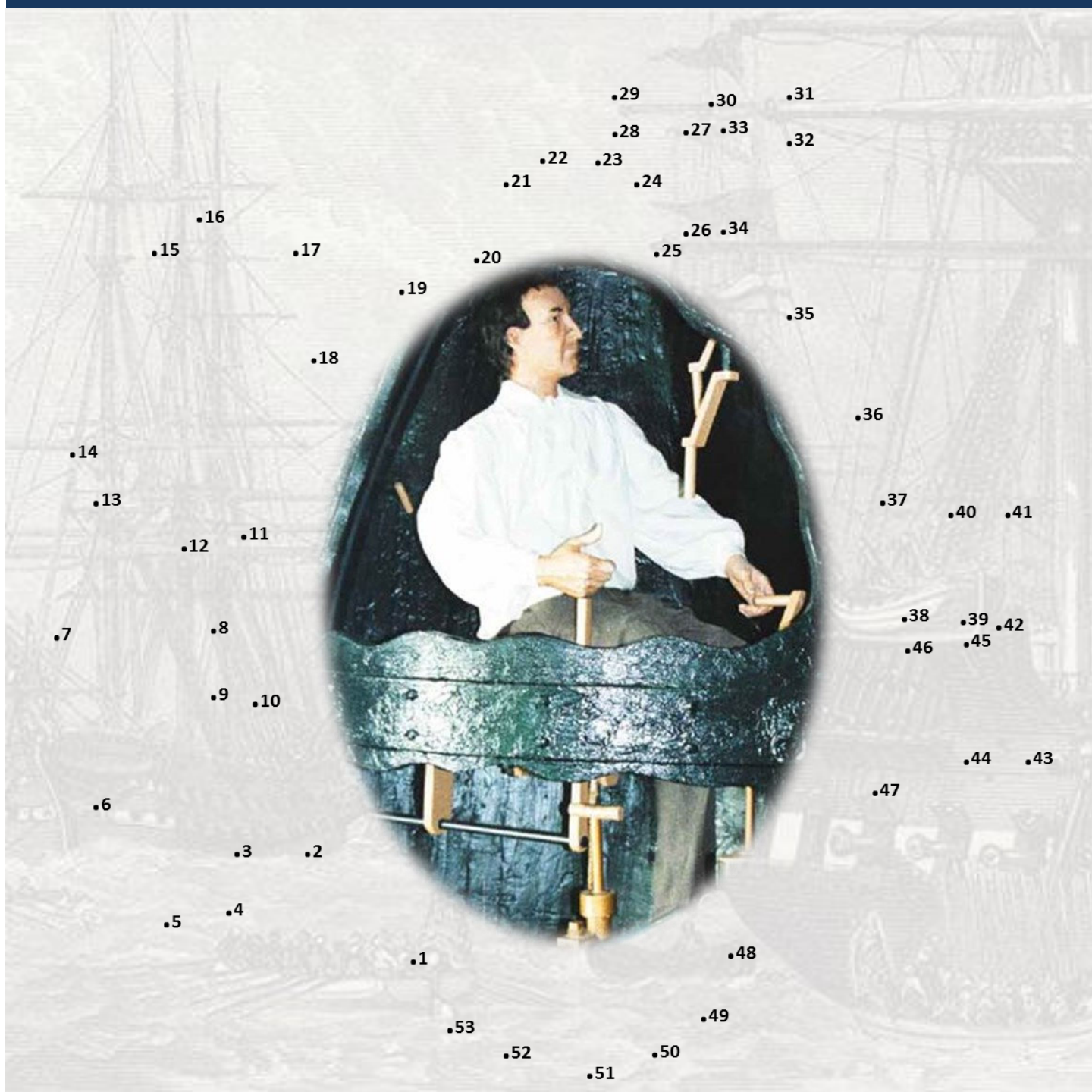




Submarine Force Museum

Activity Booklet



Connect the dots so Sgt. Ezra Lee can go on his mission.

The Turtle was the first submarine used in combat. It was designed and built by Connecticut's David Bushnell during the Revolutionary War to try and sink the British Fleet.

Name That Boat!

Each submarine has a logo usually based on its name. Submarines are often named after sea creatures, but sometimes they are named after famous people or places. For each of the logos below figure out if the submarine is named after a person, place or sea creature and circle the correct answer.



Person

Place

Sea Creature



Person

Place

Sea Creature



Person

Place

Sea Creature

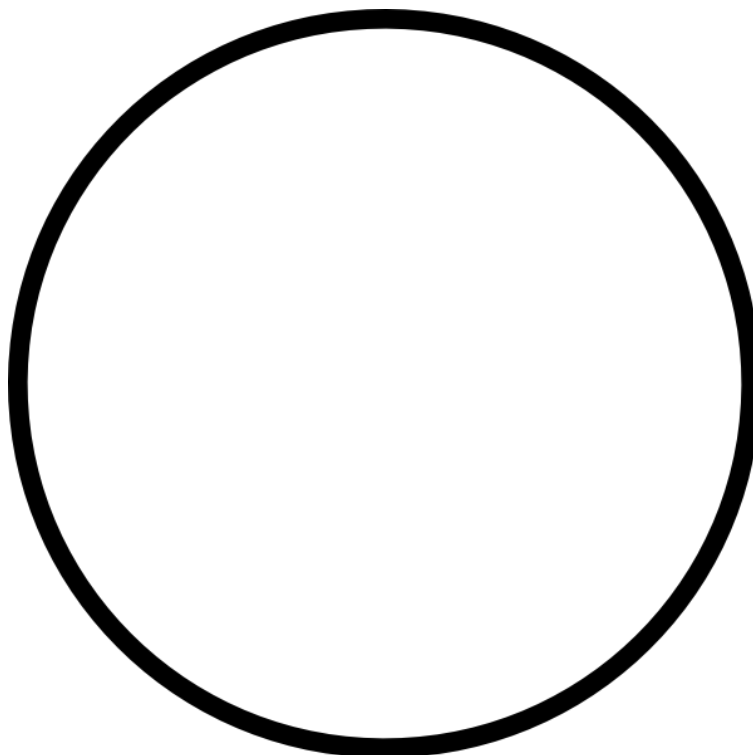


Person

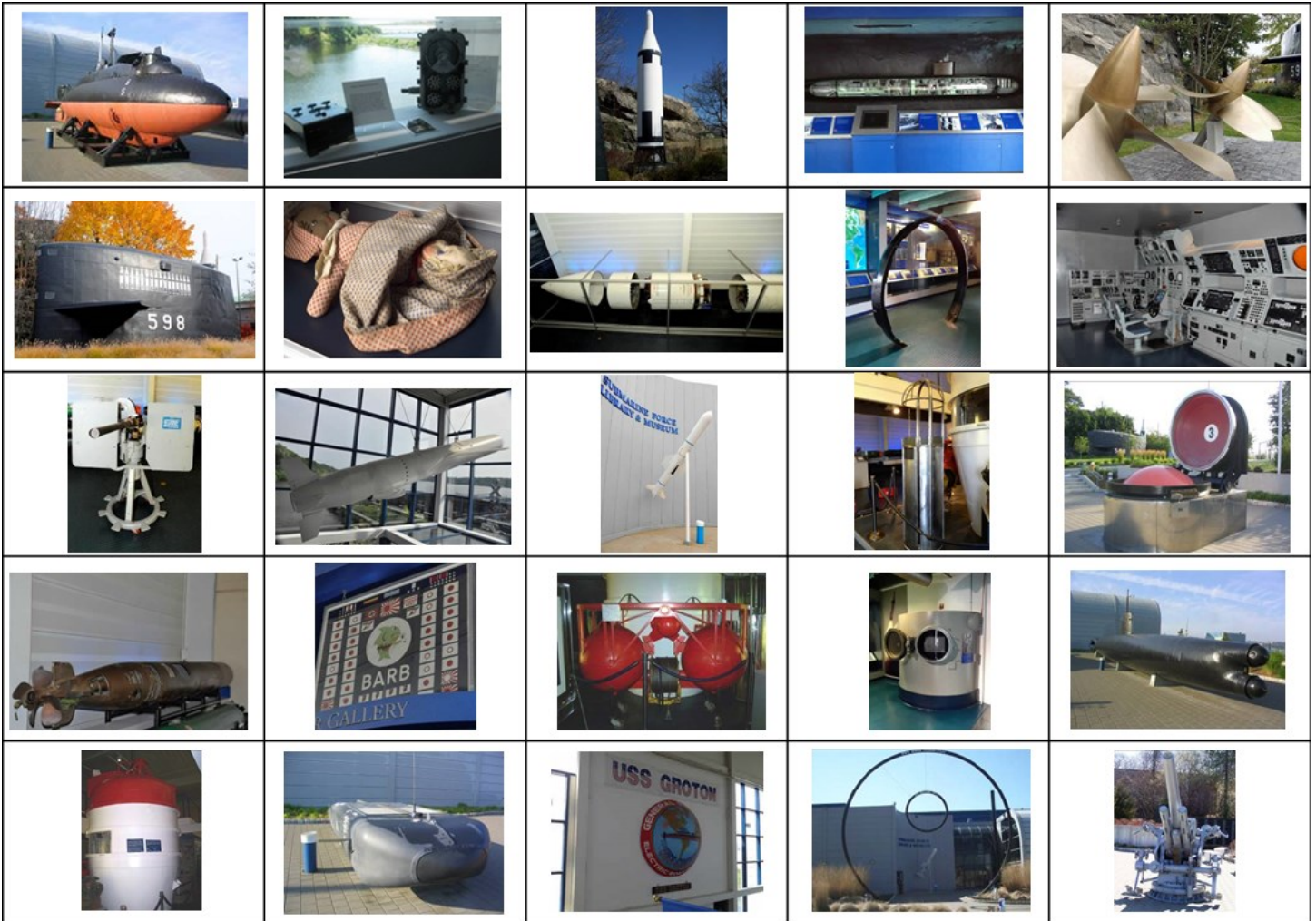
Place

Sea Creature

Now name your own submarine and draw its logo below:



Submarine Bingo



Whenever you see one of these objects in or around the museum cross it off the chart until you get five in a row either up and down, diagonally or side-to-side. Afterwards see what you can find out about each one.

What was your favorite thing in the museum and why?

An A-MAZE-ing Voyage!



Help Nautilus avoid the ice and make it safely to the North Pole!

Nautilus was the first nuclear powered submarine, it produced so much power without having to surface or even refuel that the only reason it really had to come up was to bring aboard more food for the crew! Because it could stay under water so long it was also the first submarine to reach the North Pole by traveling under the ice, even though it didn't stop to surface there as later submarines did.